

# INFRARED INSPECTIONS



**INFRATECH**  
CORPORATION

EFFICIENT SOLUTIONS. FOCUSED RESULTS.



**EFFICIENT SOLUTIONS. FOCUSED RESULTS.**

Infratech is a Canadian company incorporated in 1987 that is focused on providing industry leading products and services to our global client base.

Our group provides state of the art Infrared Inspections and Thermal Imaging Consulting Services to industry. Our experienced certified technicians provide infrared inspections of; Direct Fired Heater Tubes, Electrical Systems, Refractory Condition and GasFindIR Gas Leak detection.

In addition to our Infrared services, we offer combustion process and incineration related products manufactured to exacting specifications. Our standard and custom incinerator designs are application specific, allowing for cost efficient and environmentally sensitive combustion solutions dealing with camp, solid, medical and gas waste. We also provide platform and mobile incinerators, including a variety of other related technologies.

With in-house manufacturing, CAD technology and dynamic consulting services, Infratech is able to satisfy a variety of demands across a broad business spectrum.

# WHY CHOOSE INFRA TECH?



Infratech is focused on keeping assets healthy, productive and profitable. Our business activities limit downtime, maintain high safety standards and maximize your facility operating efficiency.

We work closely with our customers on ways to improve their business, thereby creating and solidifying long-term business partnerships. At Infratech we pride ourselves on providing Efficient Solutions and Focused Results.

- Recognized industry leader in the application of infrared technology
- Comprehensive and detailed reports generated using the latest computer enhanced thermal imaging software
- Qualified Thermographers with valuable working knowledge of the systems they are evaluating
- COR Certified
- Quality Assurance: ISO 9001:2000 Certified

## INFRARED INSPECTION SERVICES

The following is an overview of the Infrared Inspection services Infratech offers. All of our inspections are safe, accurate and designed to increase efficiency and reduce downtime.

### INFRARED ELECTRICAL INSPECTION

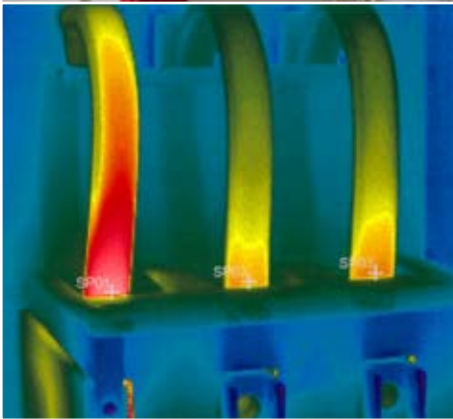
Infratech Infrared Inspections are performed while the electrical system is under load, preventing shut downs while the procedure is being completed. Inspection results will allow maintenance personnel to allocate labour, time and materials during planned shutdowns. High volumes of electrical equipment can be inspected in a short period of time with an extremely high degree of accuracy.

This highly effective inspection technique can quickly locate overheating in MCC's, switchgear, breaker panels, junction boxes, and control cabinets; caused by poor connections, corrosion, overloads, and unbalanced loads.

Our technicians have Arc Flash / NFPA 70E Training. In addition, Infratech is your source for a complete line of "infrared windows" to increase inspection safety when completing inspections on high voltage equipment.

- Proven loss prevention technique
- Integral to your facilities regular PM program
- No downtime required to complete the inspection
- High accuracy & efficiency
- Detailed database style reporting
- Certified Technicians – Arc Flash Training

SAFE AND ACCURATE



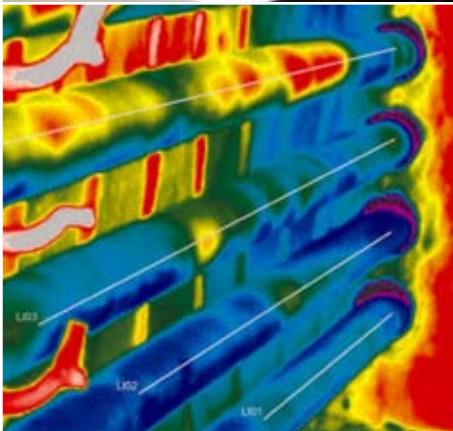
### INFRARED FURNACE INSPECTION

Infratech offers a unique online inspection system for furnaces. It effectively combines tube temperature, refractory condition, burner firing, combustion and emissions analysis in order to fully assess the present operating condition of your furnace.

Infratech pioneered this inspection technique in the late 1980's and continues to be widely recognized as the leader in this application. Localized heating due to flame impingement or internal deposits (such as coke) are the primary causes of tube failure. Thermal imaging of furnace tubes allows the technician to locate problem areas very quickly supported by enhanced imaging provided by software that assigns meaningful temperatures to full color computerized images.

- Carried out as a Predictive Maintenance (PM) inspection
- Identify potential problem areas prior to planned shutdown
- Pinpoint internal tube deposits (coke) quickly and effectively
- Inspections and reports provide a detailed picture of present operational conditions
- Maintenance recommendations to improve efficiency are brought forward
- Confirmation that maintenance and repairs have been completed effectively in post shutdown situations

INCREASE EFFICIENCY





## FUGITIVE EMISSION MANAGEMENT SERVICES

### Gas Leak Detection

As Fugitive Emissions control becomes more common as a condition of a facility's operating approval, the new and cutting edge GasFindIR camera literally lets you see what you've been missing. The new Infrared (IR) Imaging camera is a portable inspection system that detects gas leaks quickly and easily, enabling easy archiving, documenting and recording. Our qualified staff of certified technicians can scan large areas of equipment throughout your facility, identifying gas leaks with pinpoint accuracy.

The GasFindIR camera is designed specifically for operation in harsh industrial environments, is pressurized to enter Class I Div II environments, operates within a wide temperature range of between  $-15^{\circ}\text{C}$  to  $+50^{\circ}\text{C}$  and maintains a 40G shock rating.

### Gas Leak Quantification

The portable Hi Flow Sampler enables our technicians to accurately measure the gas leak rate. Through Gas Leak Quantification, a complete economical analysis determines the payback period of each leak, assisting in planning maintenance and repairs. The leak quantification data is reported in a format that can be used to report to regulatory bodies (AEUB Directive 060 Section 8.7 and CAPP BMP).

- Comprehensive reporting including video of gas leak and digital still images
- Pinpoint the exact location(s) of Gas Leaks
- Quantify leak volume using Hi Flow Sampler
- Complete an economical analysis to determine cost of leak
- Confirm maintenance and repairs were completed effectively
- Minimize emissions
- Reduce production losses
- Meet environmental reporting legislation

## INFRARED REFRACTORY INSPECTION

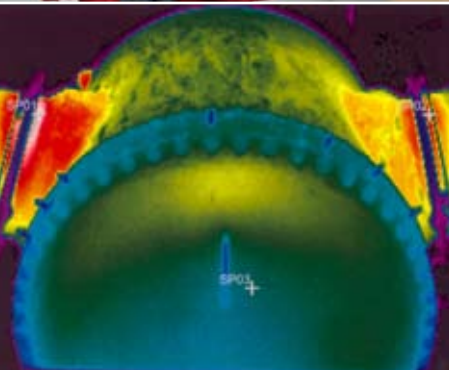
Refractory breakdown is a direct result of overheating or uneven heating in one or more areas within a refractory lined vessel. Temperature patterns on the external surfaces of the vessel are a direct function of the heat conduction through the wall. Equipment with poor refractory condition must be fired harder to maintain the desired set-point temperature. This overheating promotes localized overheating which increases refractory breakdown exponentially.

- Excellent method to confirm the refractory / insulation condition throughout your facility
- Advance warning of pending problems
- Downtime reduction
- Decreases heat loss inefficiencies and improves overall equipment performance
- Pinpoint problem areas and evaluate the scope of repairs prior to planned shutdown
- Confirm the effectiveness of maintenance repairs after shutdown
- Report is an advanced repair estimation tool

REVOLUTIONARY TECHNOLOGY



REDUCE DOWNTIME





PO BOX 2099 3415-35 AVENUE T7S 1P7

WHITECOURT, ALBERTA, CANADA

TOLL FREE 1-888-377-5432

PHONE 780-778-4226

FAX 780-778-4220

EMAIL [INFRARED@INFRATECH.CC](mailto:INFRARED@INFRATECH.CC)

[WWW.INFRATECH.CC](http://WWW.INFRATECH.CC)



**ISO**  
9001:2000

*Partnerships*  
IN HEALTH AND SAFETY



**INFRATECH**  
CORPORATION